

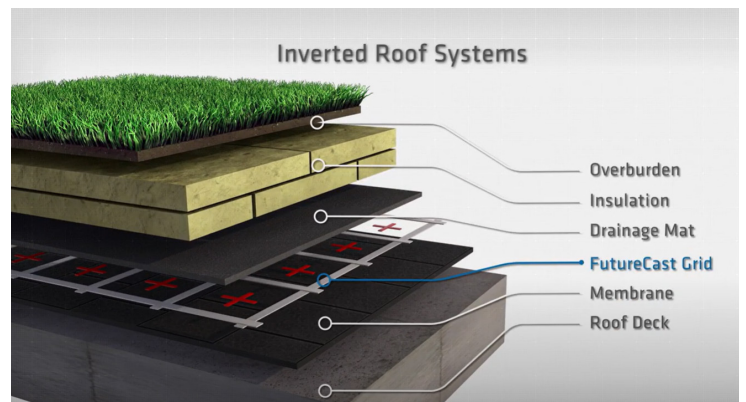
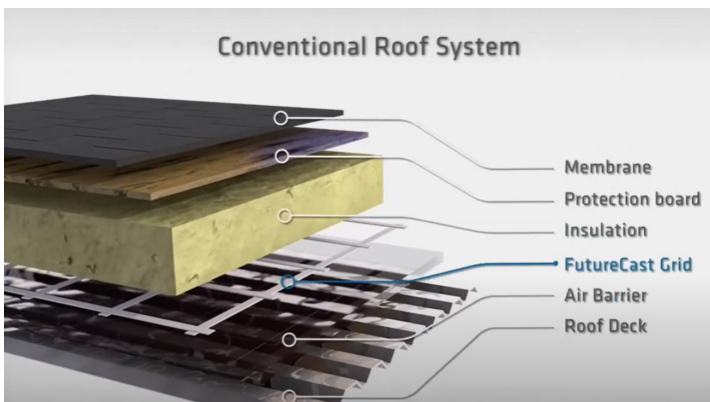
FutureCast is SMT's electronic leak detection system. A network of sensors are permanently installed in the roofing assembly, which will notify you about moisture and leak locations through electronics and cloud based servers. FutureCast keeps you always informed of your roof health, giving you peace of mind that your structure is performing as planned.

FutureCast Passive: Sensors installed will remain dormant until a SMT Technician visits the site on a predetermined schedule to take moisture readings, generating a report for the building manager.

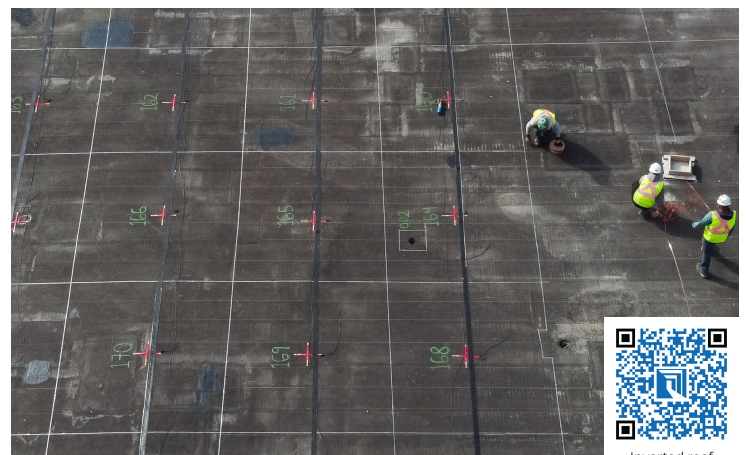
FutureCast Active: Electronics track and notify to protect your structure around the clock. An active system will take readings and will generate a notification upon detection of moisture or leak.

Conventional or Inverted Low-Slope Roof Assembly?

FutureCast systems can be installed on either conventional or inverted roofs. On a conventional roof, FutureCast detects moisture presence in these assemblies, as they should be dry. On inverted roof assemblies, FutureCast locates breaches of the waterproof membrane.



Conventional roof



Inverted roof