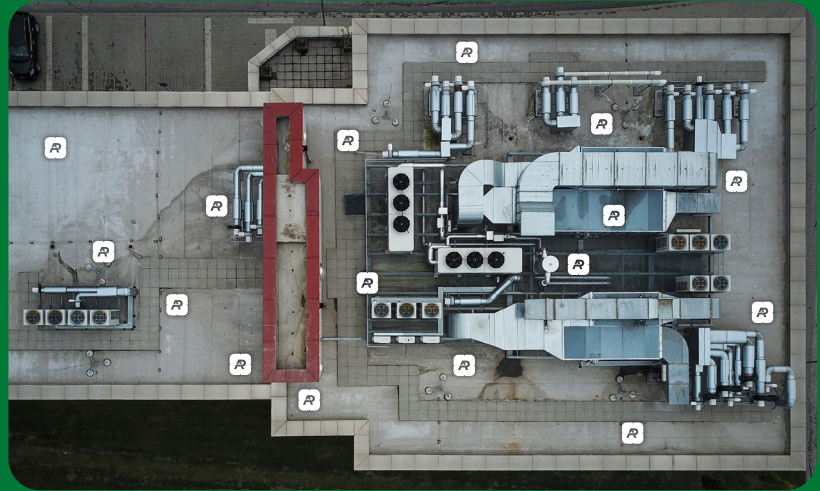




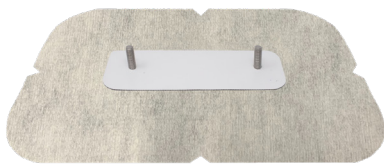
**ANCHOR
PRODUCTS®**
Connections That Last

The U3800 Coatings is a lightweight rooftop attachment system that is leak-proof by design. It is accepted by major roofing manufacturers and is included in their warranties. The U-Anchor is matched to any roof type, manufacturer, or color, making it versatile for any rooftop project.



U-ANCHOR®

U3800 Coatings



Front



Back

The U3800 Coatings is a lightweight rooftop attachment solution consisting of a U-Anchor 3000 Series plate and a reinforcement fabric. The reinforcement is dependent on the type of coating being used, and therefore the method of installation may vary.

The U3800 Coatings secures rooftop equipment quickly, safely, and effectively.

U-Anchor Advantages

- Extremely strong
- Lightweight
- Fast installation – installs in less than five minutes
- Can be installed on any surface from flat on the roof to vertical on a parapet wall
- Completely watertight when installed properly

Equipment Attachment

- The U3800 Coatings is attached by fastening through the roofing assembly into the structural decking with 2-12 approved fasteners. The U3800 Coatings is then flashed using the manufacturer's recommended method.
- To securely mount your rooftop equipment to the U-Anchor, after it is installed, the connection nut must be fastened to approximately 20-25 lbf-ft. Use a calibrated torque wrench during the installation to ensure appropriate results are achieved. Excessive torque may damage the U-Anchor.
- The U-Anchor bolt is stainless steel and all attachments provided by Anchor Products are tested as a system and designed to be compatible.

Manufacturer's Warranty

- **Anchor Products Warranty**
Standard 20-Year Limited
Material Only Warranty



**ANCHOR
PRODUCTS®**
Connections That Last



ANCHOR PRODUCTS®
Connections That Last



Make the right choice for rooftop attachments with the U-Anchor. It's a one-of-a-kind attachment for commercial rooftop equipment securement.

Testing

- **Results: Plate performance only**
Ultimate Load - Shear: 8552 lbs.
Ultimate Load - Tension: 6032 lbs.
- Tested in accordance with FM 4481 Section 4.1 over 1/2" Steel. Assembly specific results may vary. Please contact Anchor Products® directly for additional testing results and information.
- The shear value is obtained by testing at the base of the bolt. Account for the moment force of any attachment that increases the height of the connection point.

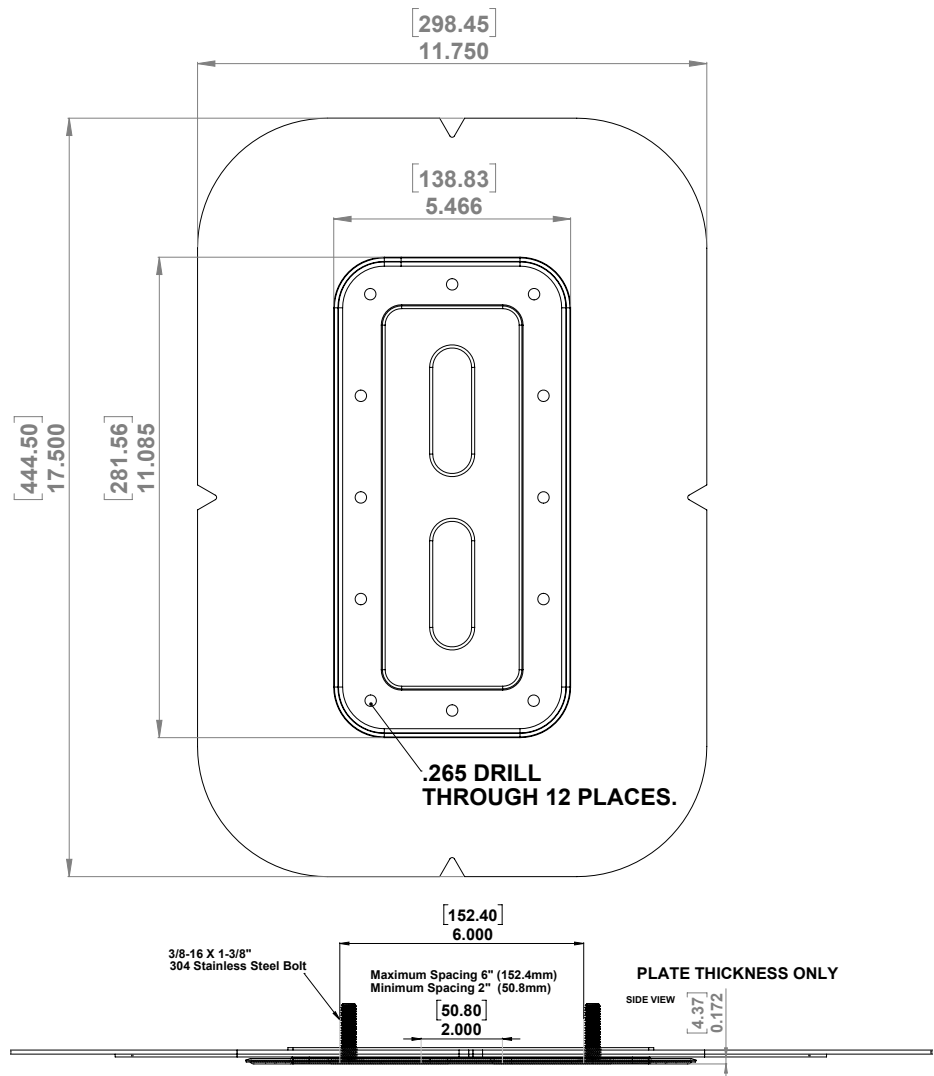
Product Specs

- **Bolt**
3/8"-16 x 1-3/8" Bolt*
Material Type: 304 Stainless Steel
- **Plate**
Outer Diameter: 5.5"
Fastener Hole Diameter: 0.265" (12 holes)
Material Thickness: 0.047"
Material Type: G90 Galvanized Steel
- **Reinforcement Fabric**
Manufacturer: Brand and Non-Brand Specific
Length: 21.25" Width: 15.75"
- **Patents**
Visit www.anchorp.com/resources/patents

Packaging Specs

- Sold Individually OR Full Box Quantity
- Individual Weight: Approx. 1.4 lbs
- Full Box Quantity: 10 units
- Box Weight: Approx. 15.2 lbs
- Box Dimensions: 19" x 19" x 6"
- Full Pallet Quantity: 30 boxes
- Pallet Dimensions: 48" x 40" x 50"

U3800 Coatings Dimensional Drawing



Click Here

[For Warranty Information](#)

* Specified bolt option is standard. Custom options may be available for additional charge. Lead times may apply depending on roofing manufacturer and product availability.



Call Us Now!
888-575-2131

anchorp.com