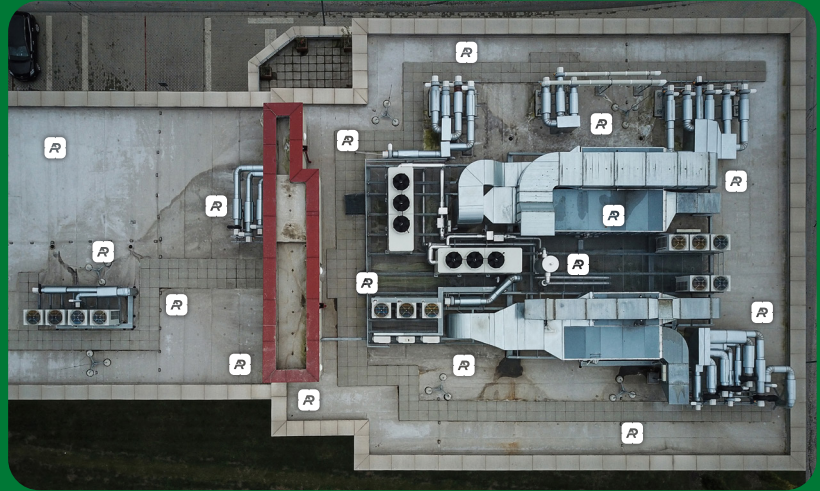




ANCHOR PRODUCTS®
Connections That Last

The U3400-EPDM is a lightweight rooftop attachment system that is leak-proof by design. It is accepted by major roofing manufacturers and is included in their warranties. The U-Anchor membrane is matched to any EPDM roof type, manufacturer, and color, making it versatile for any EPDM rooftop project.



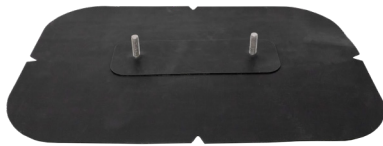
U-ANCHOR®

U3400-EPDM

Product Description

The U3400-EPDM is a lightweight rooftop attachment system consisting of a U-Anchor 3000 Series plate and cover membrane. The cover membrane is factory cut and installed in the field. The U3400-EPDM provides a positive, watertight, manufacturer accepted attachment for mechanically attached or fully adhered EPDM single-ply membranes.

The U3400-EPDM secures rooftop equipment quickly, safely, and effectively.



Front



Back

U-Anchor Advantages

- Extremely strong
- Lightweight
- Fast installation – installs in less than five minutes
- Can be installed on any surface from flat on the roof to vertical on a parapet wall
- Completely watertight when installed properly

Equipment Attachment

- The U3400-EPDM is attached by fastening through the roofing assembly into the structural decking with 2-12 approved fasteners. The membrane cover is then adhered over the plate and around the perimeter to the roof membrane. Fastener selection is dictated by the system assembly, deck type, and the project engineer.
- To securely mount your rooftop equipment to the U-Anchor, after it is installed, the connection nut must be fastened to approximately 20-25 lbf-ft. Use a calibrated torque wrench during the installation to ensure appropriate results are achieved. Excessive torque may damage the U-Anchor.
- **Material Compatibility:**
The U-Anchor bolt is stainless steel and all attachments provided by Anchor Products are tested as a system and designed to be compatible. Refer to installation instructions and the specified roofing material manufacturer requirements before installing.

Manufacturer's Warranty

- **Anchor Products Warranty**
Standard 20-Year Limited Material Only Warranty



ANCHOR PRODUCTS®
Connections That Last



ANCHOR PRODUCTS®
Connections That Last

Make the right choice for rooftop attachments with the U-Anchor. It's a one-of-a-kind attachment for commercial rooftop equipment securement.



Codes & Approvals



FM 4481 - Anchors for roof mounted equipment
FM Approval with selected membranes

Testing

- **Results: Plate performance only**
Ultimate Load - Shear: 8557 lbs.
Ultimate Load - Tension: 6032 lbs.
- Tested in accordance with FM 4481 Section 4.1 over 1/2" Steel. Assembly specific results may vary. Please contact Anchor Products® directly for additional testing results and information.
- The shear value is obtained by testing at the base of the bolt. Account for the moment force of any attachment that increases the height of the connection point.

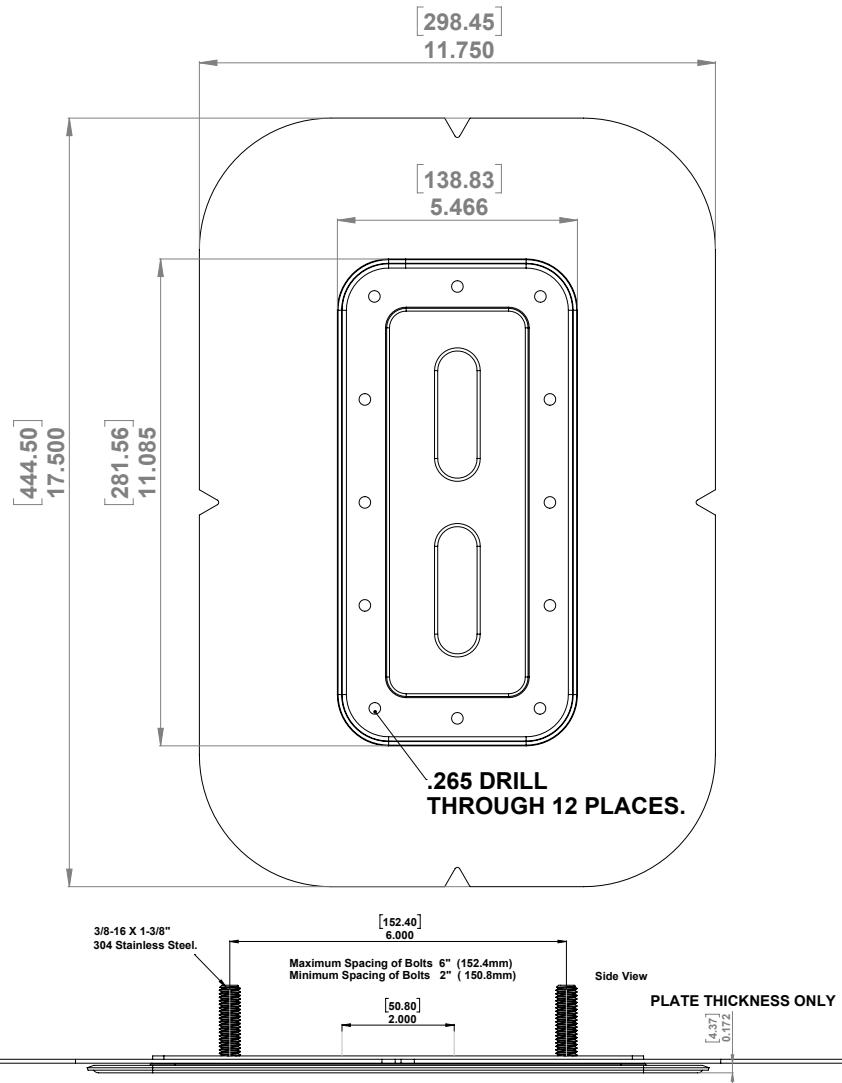
Product Specs

- **Bolt**
3/8"-16 x 1-3/8" Bolt*
Material Type: 304 Stainless Steel
- **Plate**
Dimensions: 11" x 5.5"
Fastener Hole Diameter: 0.265" (12 holes)
Material Thickness: 0.047"
Material Type: G90 Galvanized Steel
- **Cover Membrane**
Manufacturer: Brand and Non-Brand Specific
Color: Black (White is also available)
Length: 17.50" Width: 11.75"
Thickness: Default 60 mils
- **Patents**
Visit www.anchorp.com/resources/patents

Packaging Specs

- Sold Individually OR Full Box Quantity
- Individual Weight: Approx. 1.5 lbs.
- Full Box Quantity: 10 units
- Box Weight: Approx. 18 lbs.
- Box Dimensions: 19" x 13" x 9"
- Full Pallet Quantity: 30 boxes
- Pallet Dimensions: 40" x 48" x 50"

U3400-EPDM Dimensional Drawing



Click Here

[For Warranty Information](#)



Call Us Now!
888-575-2131

anchorp.com

* Specified bolt option is standard. Custom options may be available for additional charge. Lead times may apply depending on roofing manufacturer and product availability.

© Anchor Products
6316 Airport Fwy. Ste. D, Haltom City, TX 76117

U-3400 20240813

Connections That Last

