



AMERICAN
BUILDING
COMPONENTS



CUSTOM STEEL BUILDINGS

Table of Contents



Why **American Building Components?**

ABC is a national manufacturer of high-quality steel products established to serve do-it-yourselfers, homeowners, suburban farmers and contractors of all metal projects. We offer a large variety of metal roof and wall panels, trim and accessories perfectly suited for commercial, agricultural, post-frame and residential applications, as well as customizable metal building packages ranging from small backyard structures to full-size commercial buildings spanning thousands of square feet.

Advantages of Steel Buildings

- **Energy and Insurance Savings:** Steel Buildings are designed to withstand high winds, snow, driving rain, fire, rodents and mold, which make them a smart insurance investment. Our insulated roof and wall panel options, ENERGY STAR®-rated exterior panels and the reflectivity of our coatings also help save on heating and cooling costs.
- **Virtually Maintenance Free:** Steel does not warp or twist, and it also prevents termites and rodents from threatening the building. Steel is not susceptible to holding moisture within the material, lessening the threat of mold and mildew growth.
- **Remodeling and Additions:** Expandable endwall frames allow for length to be added to buildings after initial construction. Porches, lean-tos and awnings are options as well.
- **Value in Strength and Longevity:** ABC steel buildings come with industry-leading paint warranties and engineer stamped blueprints verifying compliance with current local building code requirements that will not degrade over the course of its lifetime.



Build Your Dream

We know you're looking for more than just materials when choosing a new metal building. You're looking for value, dependability and a partner you can count on to be there throughout the project's life—even after it's erected. This is why American Building Components is focused on providing you with the materials you need and the confidence that the products you're getting are the quality you expect to support your building goals.

Versatile Building Options

Residential	Ag/Equestrian	Commercial/Industrial
<ul style="list-style-type: none">• Garage Storage• Hobby Shops• Boat/RV Storage• Barndominiums	<ul style="list-style-type: none">• Farm Storage• Dairy Production• Livestock Shelter• Riding Arenas	<ul style="list-style-type: none">• Retail Spaces• Warehouses• Recreation Centers• Freight Facilities

With ABC's steel building solutions, you can select specifications and options that meet your specific needs—whether you're building your home, storage or farm building, hobby shop, or retail or recreation space. Find what you need to customize the perfect steel structure for you by browsing this brochure, visiting our website or talking to one of our custom building experts. We're here to help.

Contact your local ABC representative to begin your custom building project.

www.abcmetalroofing.com

Builder Series



American Building Components' Builder Series is a built-to-order, engineered metal building solution with nearly unlimited design options. These fit-for-purpose, bolt-up engineered steel buildings can be completely customized to suit your ideal combination of sizes, accessory options and frame designs. With the buyer in control of design, ABC customer steel building provide the flexibility required for specialized spaces and unique uses.

The Builder Series is designed and manufactured with superior quality and is available with upgraded options that increase design alternatives and allow for maximum creativity. Our roof and wall panels come standard in 26-gauge thickness—with 24-gauge as an option for any of our 14 Signature® 200 Commercial & Industrial colors—and include a 40-year chalk and fade warranty. In addition to the industry-standard PBR panel, our standing-seam and/or our AVP insulated panels can be selected for use on roof and wall applications.

THE ABC Advantage

Engineered to meet current international and local building codes, ABC utilizes a flexible estimating program capable of quoting multiple building options and seamlessly moving from quotes to orders to get complete building packages delivered as soon as possible. Our nationwide footprint of manufacturing facilities and expansive delivery capabilities ensures that no matter where you're located in the United States, our shipment is only a few days away.

Endless Opportunity

Whether you need extra storage for your lawn tools or just more workspace for your hobby, ABC Builder Series are easily assembled, available in a variety of color combinations and come with a standard 40-year paint warranty. Pre-punched holes eliminate measuring, thus making assembly quicker and easier. Other accessories/options include:

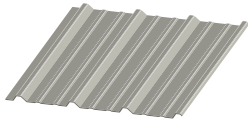
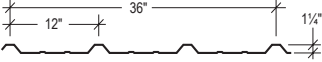
- All fasteners and sealants
- Erection drawings—stamped and engineered
- Framed openings plus several door styles and sizes
- Windows, skylights and wall lights
- Canopies and overhangs up to 5'-0" wide
- Ridge vents, wainscot and pipe flashings
- Standing-seam roofs
- Insulated metal roof and wall panels

• Metal building components can also be ordered separately. Building erection, concrete and anchor bolts not included.

Please visit our website at www.abcmetalroofing.com or contact your local sales representative for additional information and to place ordersto order.

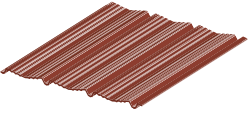
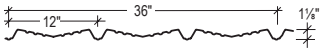
Panel Options

PBR



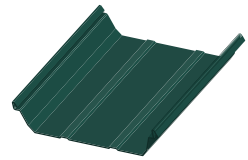
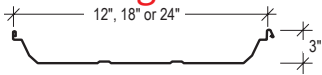
The PBR panel is commonly used for a wide variety of architectural, agricultural, commercial and industrial applications. PBR is a structural, exposed-fastened panel that can be used for both roof and wall applications. The minimum roof slope for PBR is 1/2:12.

AVP



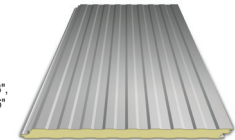
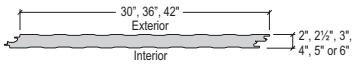
The AVP panel is used for wall applications and features pencil ribs, providing improved aesthetics to building design.

Standing Seam



Our standing seam roof panels are snap-together, trapezoidal leg systems available in 12-inch, 18-inch and 24-inch widths. They require a minimum slope of 1/4:12, are ideal for industrial, commercial and architectural applications and can be erected on various types of construction.

Insulated



Most commonly used for commercial applications, our insulated panels are designed for exterior roof and wall applications, interior wall partitions and interior ceilings. The lightly corrugated profile on both faces of the panels carry symmetry from the building's exterior through its interior, and from room to room in partition installations.

SIGNATURE® 200 Standard Wall & Trim Colors

SILICONIZED POLYESTER

Polar White is a Straight Polyester.

- Final color selection should be made from metal color chips.
- See product catalog for gauge and color availability.



HAWAIIAN BLUE ★



CRIMSON RED ★



FERN GREEN ★



BURNISHED SLATE ★



ASH GRAY ★



SADDLE TAN ★



DESERT SAND ★



KOKO BROWN ★



CHARCOAL GRAY ★



COBALT BLUE ★



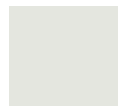
RUSTIC RED ★



LIGHT STONE ★



SOLAR WHITE ★



POLAR WHITE ★★

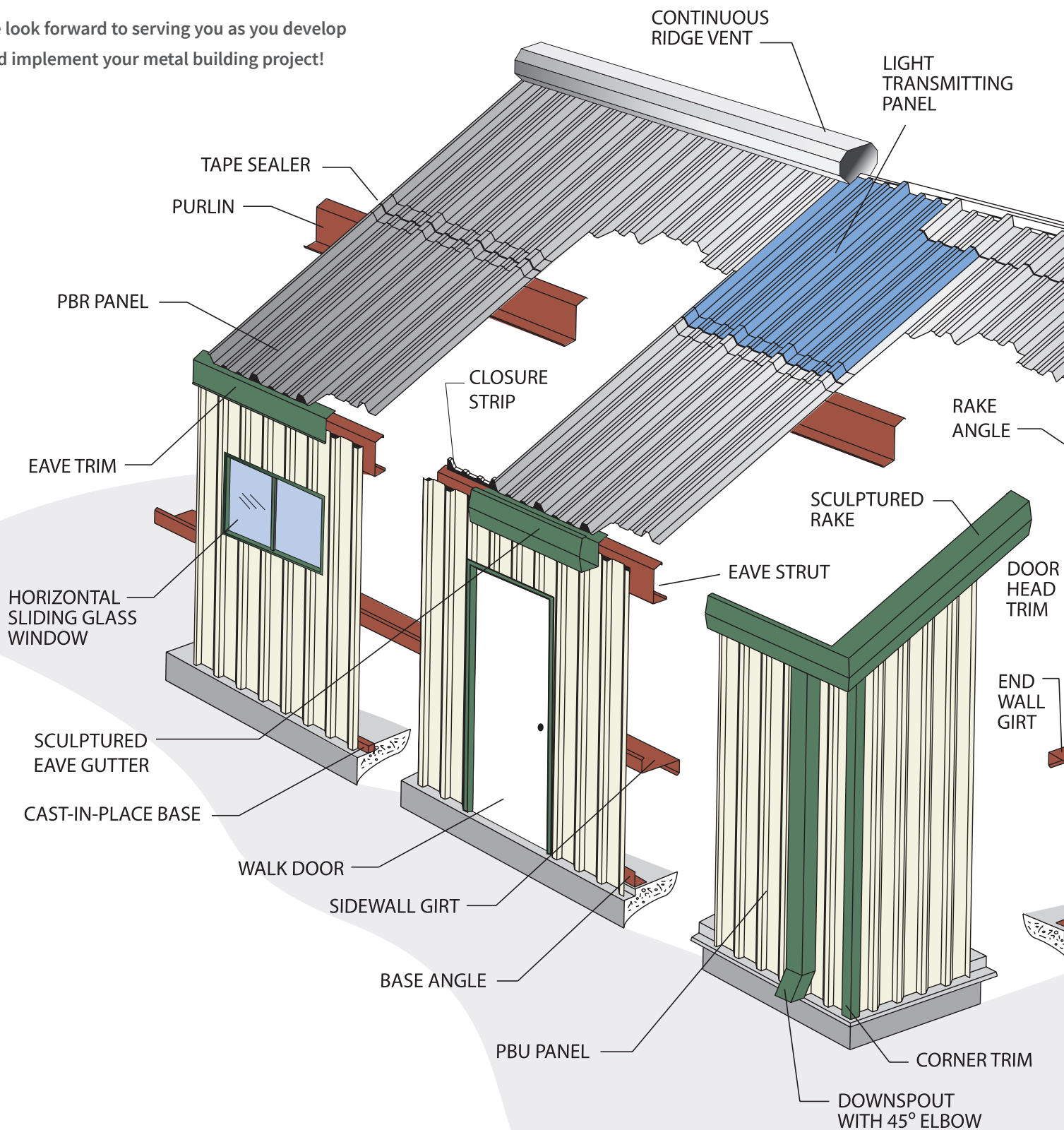
★ ENERGY STAR® APPROVED
★★ AVAILABLE IN 29-GAUGE

Buildings at a Glance

Commitment to Service

This detail and glossary are provided to assist you in becoming familiar with the structure, components and terminology that are native to the metal building industry and used by ABC. Additional items (that may not be shown here) are defined on our website glossary — www.abcmetalroofing.com and most metal components shown can be ordered separately for repairs or additional building projects.

We look forward to serving you as you develop and implement your metal building project!



Anchor Bolt Plan

A plan view drawing showing the diameter, location and projection of all anchor bolts for the components of the metal building system and may show column reactions (magnitude and direction). The maximum base plate dimensions may also be shown.

Approval Drawings

A set of drawings that may include framing plans, elevations and sections through the building for approval by the builder.

Base Angle An angle secured to a wall or foundation used to attach the bottom of the wall paneling.

Bay The space between frame center lines or primary supporting members in the longitudinal direction of the building.

Beam and Column

A structural system consisting of a series of rafter beams supported by columns. Often used as the end frame of a building.

Bracing Rods, angles or cables used in the plane of the roof and walls to transfer loads, such as wind, seismic and crane thrusts to the foundation.

Building Code Regulations established by a recognized agency describing design loads, procedures and construction details for structures usually applying to a designated political jurisdiction (city, county, state, etc.).

Built-Up Section

A structural member, usually an "I" shaped section, made from individual flat plates welded together.

Cee Section A structural member in the shape of a block "C" formed from steel sheet that may be used either singularly or back to back.

Closure Strip A strip, formed to the contour of ribbed panels and used to close openings created by ribbed panels joining other components, either made of resilient material or metal.

Eave The line along the sidewall formed by the intersection of the planes of the roof and wall.

Framed Opening

Framing members and flashing which surround an opening.

Gable The triangular portion of the endwall from the level of the eave to the ridge of the roof.

Main Frame An assemblage of rafters and columns that support the secondary framing members and transfer loads directly to the foundation.

Purlin A horizontal structural member that supports roof coverings and carries loads to the primary framing members.

Rake The intersection of the plane of the roof and the plane of the endwall.

Ridge The horizontal line formed by opposing sloping sides of a roof running parallel with the building length.

Self-Drilling Screw

A fastener that combines the function of drilling and tapping.

Self-Tapping Screw

A fastener that taps its own threads in a predrilled hole.

Ventilator A roof mounted accessory which allows the air to pass through.

Zee Section A structural member cold formed from steel sheet in the approximate shape of a "Z".

Loads:

- **Auxiliary Loads** All specified dynamic live loads other than the basic design loads which the building must safely withstand, such as cranes, material handling systems, machinery, elevators, vehicles and impact loads.
- **Collateral Loads** The weight of additional permanent materials required by the contract other than the building system, such as sprinklers, mechanical and electrical systems, partitions and ceilings.
- **Dead Loads** The dead load of a building is the weight of all permanent construction, such as floor, roof, framing and covering members.
- **Design Loads** Those loads specified in building codes published by federal, state, county or city agencies or in owner's specifications to be used in the design of a building.
- **Live Loads** Loads that are produced (1) during maintenance by workers, equipment and materials and (2) during the life of the structure by movable objects and do not include wind, snow, seismic or dead loads.



IMPORTANT NOTE: Colors shown are for illustration purposes only and do not represent actual colors sold by ABC. Final selection should be made from metal color chips.



ABCMetalRoofing.com
shop.ABCMetalRoofing.com

Adel, GA 877.595.6604
Lubbock, TX 877.695.0477
Memphis, TN 877.774.0157
Mount Pleasant, IA 877.768.9460
Frankfort, KY 877.780.2119
Oklahoma City, OK 877.795.4399
Phoenix, AZ 877.774.6219
Rome, NY 877.785.0821
Salt Lake City, UT 877.814.1419

Descriptions and specifications contained herein were in effect at the time this publication was approved for printing. In a continuing effort to refine and improve products, American Building Components reserves the right to discontinue products at any time or change specifications and/or designs without incurring obligation. To ensure you have the latest information available, please inquire or visit our website at abcmetalroofing.com.